

# PRO PLUG SYSTEM®

## Trim

### Hidden Fastener for PVC Trim Board



#### APPLICATION

Hidden fastening system that provides a secure face-fastened connection with precision cut plugs made from actual PVC trim boards. Installation is a two-step process utilizing a setting tool, screws and plugs. All components must be used together as instructed to ensure proper function.

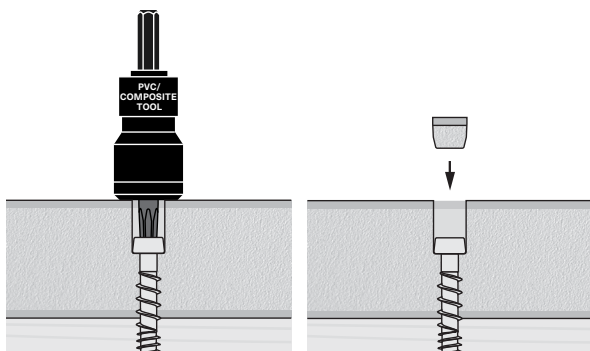
#### FEATURES

- Plugs are for 5/8" to 1-1/4" thick PVC trim and available in all leading brands
- Available in Kits (screws, plugs and tool) and Inventory Management (system components sold separately)
- Patented PVC/Composite Tool with Auto-Stop™ sets screw to the correct depth without stripping screw recess
- Free spinning stop collar on setting tool prevents damage to the board surface
- Screws feature a Type 17 auger tip for faster, easier insertion and to help prevent splitting

#### INSTALLATION

Follow all PVC trim manufacturer instructions, including specifications for screw spacing, edge/end distances, and gapping.

- Fit setting tool with application specific driver bit, marked "TRIM".
- Drive the screw with the PVC/Composite Tool using a standard drill on high speed.
- Do not use impact driver with setting tool.
- The setting tool's Auto-Stop™ mechanism will make a "pop" sound when the screw is set to the correct depth. (Do not hesitate or slow down while driving.)
- Insert plug into hole and tap with a smooth-faced hammer until the plug is flush with board.



#### FINISH

Epoxy coated  
Grade 305 Stainless  
Grade 316 Stainless

#### CORROSION

Exterior use—Approved for use in ACQ and pressure treated lumber.  
  
For salt water or other areas where corrosion is a concern, use Grade 316 Stainless.

#### DRIVE SYSTEM

Star drive

#### TOOL COMPATIBILITY

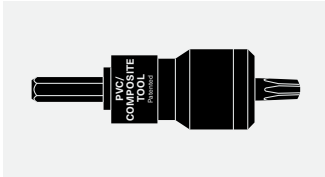
PVC/Composite Tool  
PVC/Composite TRIM Bits

PLUGS AVAILABLE IN THE FOLLOWING BRANDS

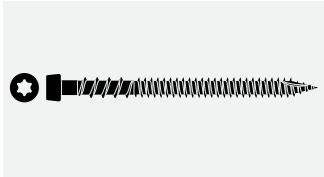
AZEK®	BETTER BRAND®	BORAL®	CERTATRIM®	GREEN ATLANTIC®
INTEPLAST®	KLEER®	KOMA®	PALIGHT®	PLY GEM®
RESTORATION MILLWORK®	ROYAL®	VERSATEX®	WOLF	XO™

New board brands are always being added to our product offering. Please refer to our website or contact Starborn® customer service if you do not see the board brand you are looking to use on your project.

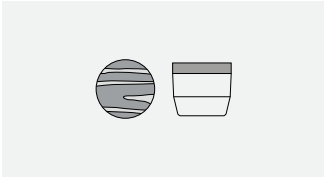
SYSTEM COMPONENTS



**PVC/Composite Tool**  
For setting screws to the correct depth



**Screws**  
Epoxy coated, grade 305 or grade 316 stainless, or epoxy coated grade 410 stainless for metal framing



**Plugs**  
Made from actual PVC/Composite decking and trim material



**Trim Bits**

PRO PLUG® SYSTEM TRIM PACKAGING

KIT PACKAGING					
LENGTH	FINISH	COVERAGE	SCREWS	PLUGS	TOOL
2"	Epoxy	50 lf	75	85	—
		250 lf	375	400	1
		750 lf	1125	1200	1
2-3/4"		50 lf	75	85	—
		250 lf	375	400	1
		750 lf	1125	1200	1
2"	305 Stainless	50 lf	75	85	—
		250 lf	375	400	1
		750 lf	1125	1200	1
2-1/2"		50 lf	75	85	—
		250 lf	375	400	1
		750 lf	1125	1200	1

INVENTORY MANAGEMENT—PLUGS ONLY	
PLUGS	COVERAGE
100	—
400	250 lf
1200	750 lf

INVENTORY MANAGEMENT—SCREWS ONLY			
LENGTH	FINISH	SCREWS	COVERAGE
2"	Epoxy	100	—
		375	100 sq ft
		1125	300 sq ft
2-3/4"		100	—
		375	100 sq ft
		1125	300 sq ft
3"		100	—
		375	100 sq ft
		1125	300 sq ft
2"	305 Stainless	100	—
		375	100 sq ft
		1125	300 sq ft
2-1/2"		100	—
		375	100 sq ft
		1125	300 sq ft
3"		100	—
		375	100 sq ft
		1125	300 sq ft
2-1/2"	316 Stainless	100	—
		375	100 sq ft
		1125	300 sq ft
3"		100	—
		375	100 sq ft
		1125	300 sq ft